

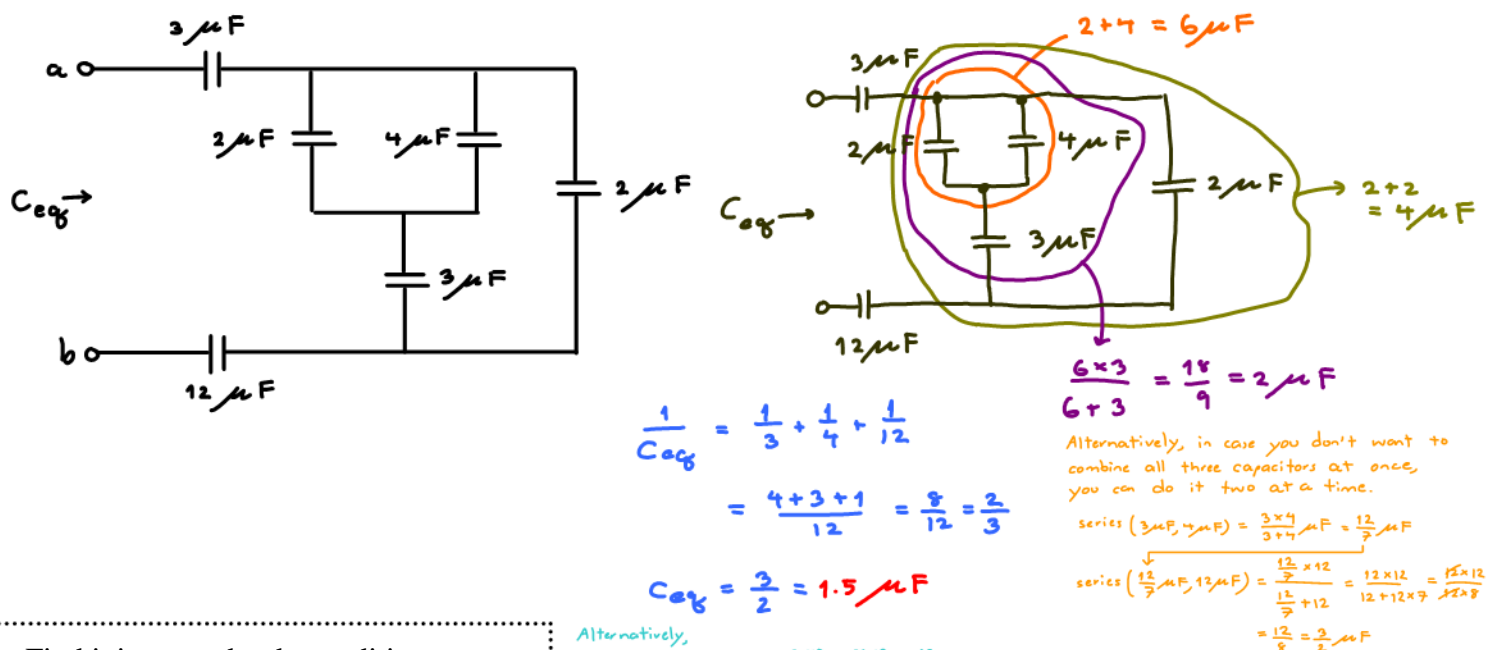
# ECS 203 2014: Quiz 4 **Solution**

## Instructions

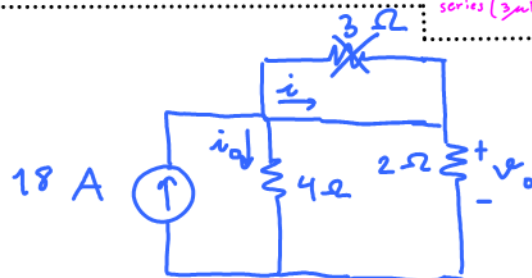
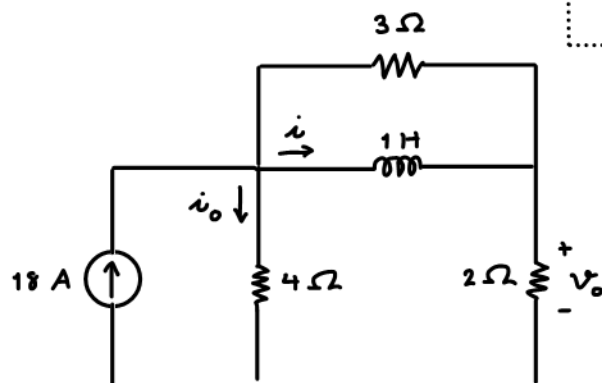
- Separate into groups of no more than three persons. Make sure the group members are not exactly the same as any of your earlier groups.
- Only one submission is needed for each group. Late submission will not be accepted.
- Write down all the steps** that you have done to obtain your answers. You may not get full credit even when your answer is correct without showing how you get your answer.

Name	ID
<b>Prapun</b>	<b>555</b>

1) Compute the equivalent capacitance  $C_{eq}$  to the right of the two terminals a-b



2) Find  $i$ ,  $i_o$ ,  $v_o$  under dc condition.



Current divider:

$$i = \frac{4}{2+4} \times 18 = 12 A$$

$$i_o = \frac{2}{4+2} \times 18 = 6 A$$

Ohm's law

$$v_o = 12 \times 2 = 24 V$$